

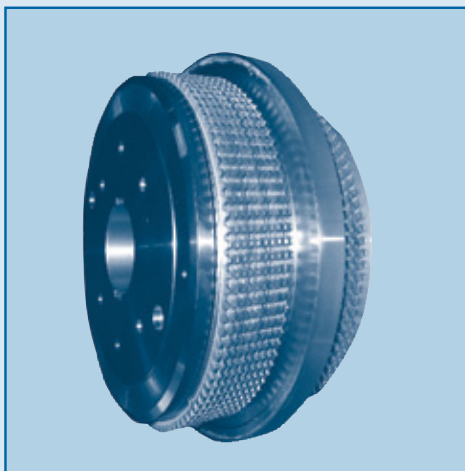


WET CLUTCH-BRAKE SERIES 5.W

This series of clutch-brake is the version of the pneumatic actuated and hydraulically refrigerated multiplate clutch-brake.

It combines the engagement of the pneumatic clutch-brake, with the refrigeration capacity of the hydraulic clutch-brakes. As a result, we obtain a clutch-brake with the possibility of a high frequency of engagements.

The disc refrigeration could be plunged in oil, (no external circuit) or with a forced refrigeration or external circuit, depending on the required dissipation energy of the application.

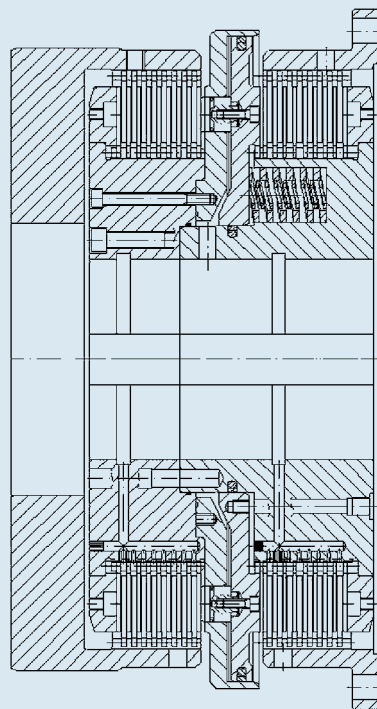


FRENO-EMBRAGUE OLEONEUMÁTICO SERIE 5.W

Éste es el freno-embrague multidisco actuado neumáticamente y refrigerado por aceite.

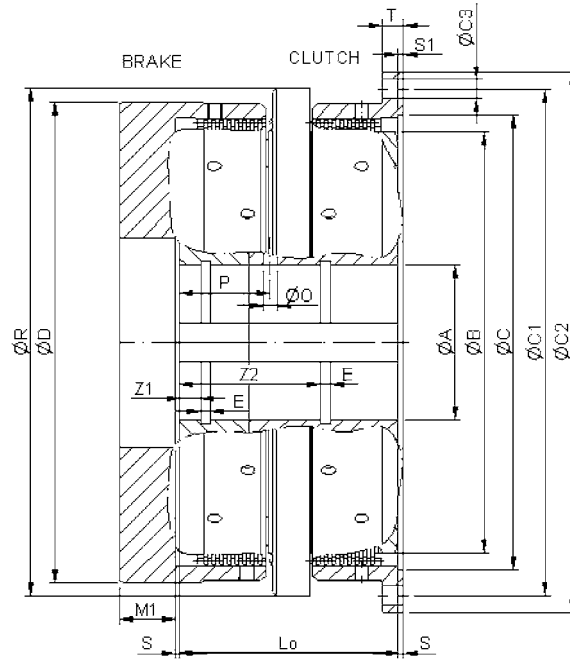
Esta serie de freno-embrague combina el accionamiento del embrague neumático con la capacidad de refrigeración de los embragues hidráulicos. Como resultado tenemos un freno-embrague con la posibilidad de obtener una alta frecuencia de maniobras.

La refrigeración se produce dependiendo de la energía de disipación requerida por la aplicación, esta refrigeración puede ser forzada por medio de un circuito exterior, para lo cual el freno-embrague está preparado.

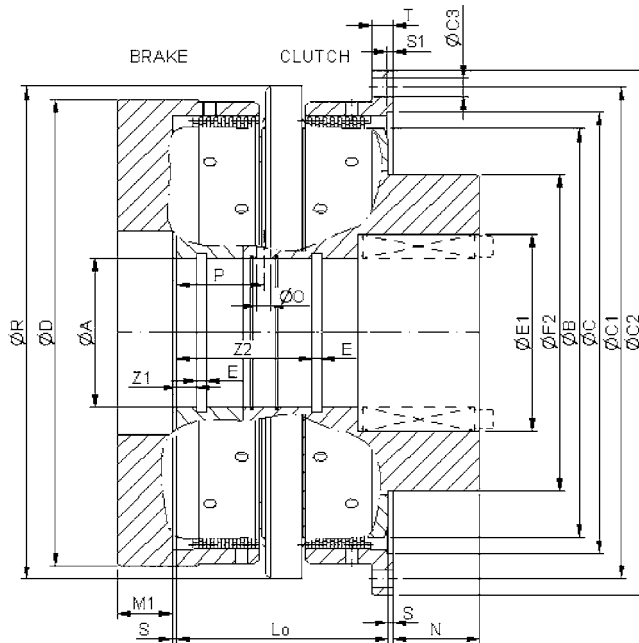




Series 5.W1



Series 5.W5



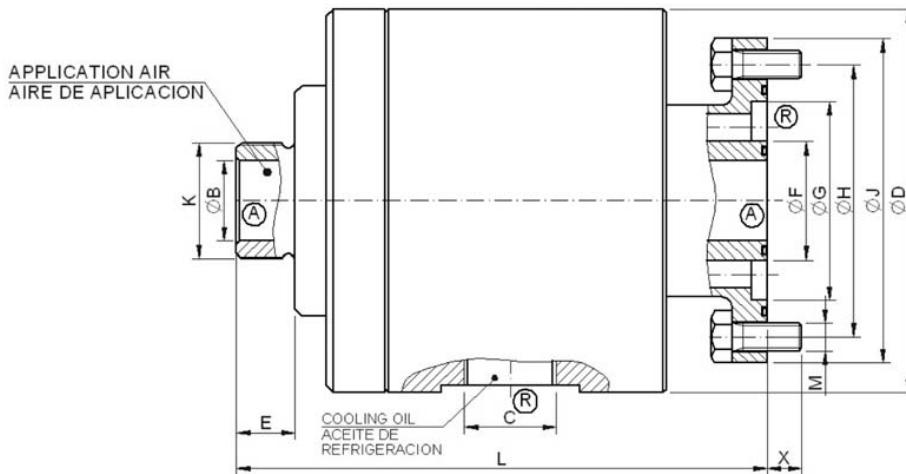


Series 5.W1 / 5.W5

Series			5.W1	5.W5	5.W1	5.W5	5.W1	5.W5	5.W1	5.W5	5.W1	5.W5
Size			75	77	78	81	82					
DYNAMIC BRAKE TORQUE	Brake side discs= 5	Nm	1460	2700	5400	10800	20600					
	Brake side discs= 6		1760	3300	6500	13000	24700					
	Brake side discs= 7		2050	3800	7600	15200	28800					
	Brake side discs= 8		2350	4400	8700	17300	32900					
	Brake side discs= 9		2640	4900	9800	19500	37000					
	Brake side discs= 10		2930	5500	10900	21700	41200					
STATIC CLUTCH TORQUE	Clutch side discs= 5	Nm	3270	6300	10000	21300	45900					
	Clutch side discs= 6		3910	7600	12000	25500	54700					
	Clutch side discs= 7		4540	8800	13900	29600	63400					
	Clutch side discs= 8		5150	10000	15800	33600	72000					
	Clutch side discs= 9		5770	11300	17600	37700	80600					
	Clutch side discs= 10		6370	12500	19500	41600	89200					
Max speed		min-1	1300	1000	850	700	500					
Weight (8+8 discs)		Kg	91	101	174	202	284	319	530	613	1076	1181
J.int	Total discs= 10	Kg m2	0.44	0.51	1.13	1.41	2.92	3.48	8.54	10.38	31.31	36.27
	Total discs= 20		0.57	0.64	1.47	1.75	3.75	4.31	10.87	12.71	40.38	45.33
Volum (8+8 discs)		dm ³	0.25	0.47	0.77	1.38	2.77					
Ø A	min		70	80	105	120	160					
	max		95	115	150	180	250					
Ø B			260	320	390	490	630					
Ø C (H7)			277	350	415	530	670					
Ø C ₁			310	400	470	590	750					
Ø C ₂ (g7)			330	425	500	630	800					
Ø C ₃ (12X30°)			11	13.5	17.5	22	26					
Ø D			296	380	440	560	710					
E			8	12	12	12	15					
E ₁ max			135	155	200	235	305					
F ₂			200	250	300	380	475					
L ₀	Total discs= 10		131	136	176	204	270					
	Total discs= 12		143	149	192	222	294					
	Total discs= 14		155	162	208	240	318					
	Total discs= 16		167	175	224	258	342					
	Total discs= 18		179	188	240	276	366					
	Total discs= 20		191	201	256	294	390					
M ₁			40	50	60	65	75					
N			70	108	116	132	174					
Ø O			8	10	13	16	20					
P	Brake side discs= 5		46	48.5	64	78	106					
	Brake side discs= 6		52	55	72	87	118					
	Brake side discs= 7		58	61.5	80	96	130					
	Brake side discs= 8		64	68	88	105	142					
	Brake side discs= 9		70	74.5	96	114	154					
	Brake side discs= 10		76	81	104	123	166					
R			311	388	468	592	755					
S			5	5	5	5	5					
S ₁			6	6	6	6	6					
T			12	16	20	25	30					
Z ₁			14	14.5	26.5	24	32					
Z ₂	Brake side discs= 5		91	96.5	129	141	186					
	Brake side discs= 6		97	103	137	150	198					
	Brake side discs= 7		103	109.5	145	159	210					
	Brake side discs= 8		109	116	153	168	222					
	Brake side discs= 9		115	122.5	161	177	234					
	Brake side discs= 10		121	129	169	186	246					



AIR ROTARY INLET / RACORES GIRATORIOS



Series	7.07.12.908	7.07.03.912	7.07.04.909
Ø B	14	23	32
C	1/2" Gas	3/4" Gas	1" Gas
Ø D	90	110	136
E	15	17	22
Ø F	26	34	43
Ø G	44	57	72
Ø H	64	78	100
Ø J (g6)	75	93	118
K	3/4" Gas	1" Gas	1 1/2" Gas
L	140	153	184
M	M6 (4x90°)	M8 (4x90°)	M10 (4x90°)
X	10	10	16
For Sizes	75-77	78-81	82

ASSEMBLY EXAMPLE / EJEMPLO DE MONTAJE

