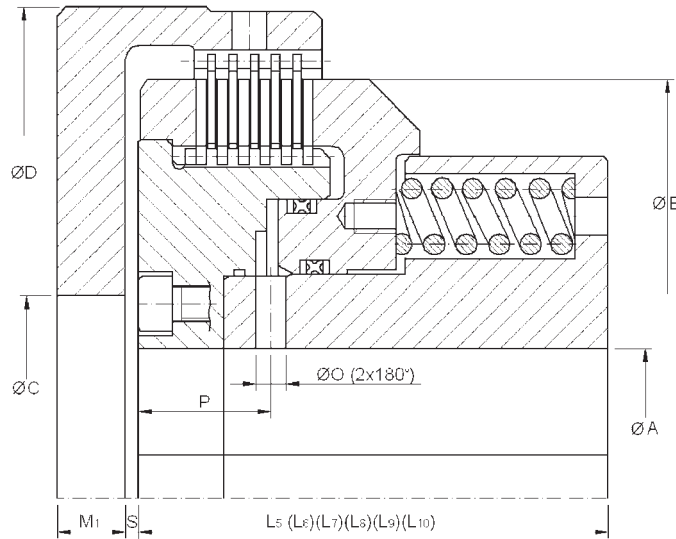




HYDRAULIC SAFETY BRAKES / FRENOS HIDRÁULICOS DE SEGURIDAD

Series 6.12



Series			6.12							
Size			25	75	77	78	81	82	83	84
Static Brake Torque (Nm)(*)	Number of discs	5	1000	2500	5000	10000	20000	40000	80000	120000
		6	1200	3000	6000	12000	24000	48000	96000	144000
		7	1400	3500	7000	14000	28000	56000	112000	168000
		8	1600	4000	8000	16000	32000	64000	128000	192000
		9	1800	4500	9000	18000	36000	72000	144000	216000
		10	2000	5000	10000	20000	40000	80000	160000	240000
J int. (kg m ²)	Number of discs	5	0,09	0,372	0,948	2,501	5,832	24,29	66,86	172
		10	0,105	0,427	1,173	3,091	7,562	30,04	82,16	207
Weight (Kg)			40	80	160	295	510	1030	1900	3350
Max. speed (min ⁻¹)			1700	1300	1000	850	700	500	415	350
Operating pressure (bar)			40							
Back pressure (bar)			24							
Ø A H7min.			58	70	80	105	120	160	180	220
Ø A H7max.			75	95	115	150	180	250	310	375
Ø B			196	260	320	390	490	630	778	930
Ø C H7min.			80	100	120	155	185	255	315	380
Ø D			230	290	380	440	560	710	870	1040
L ₅			110	135	170	205	230	290	365	416
L ₆			115	141,5	177,5	215	241	304	381,5	435,5
L ₇			120	148	185	225	252	318	398	455
L ₈			125	154,5	192,5	235	263	332	414,5	474,5
L ₉			130	161	200	245	274	346	431	494
L ₁₀			135	167,5	207,5	255	285	360	447,5	513,5
M ₁			35	40	50	60	65	75	84	100
Ø O			6	7	10	11,5	15	19	24	28
P			31	36	48	60	65	82	100	125
S			5	5	5	5	5	5	10	10

(*) These data are for wet running, in case of dry running consult with GOIZPER.

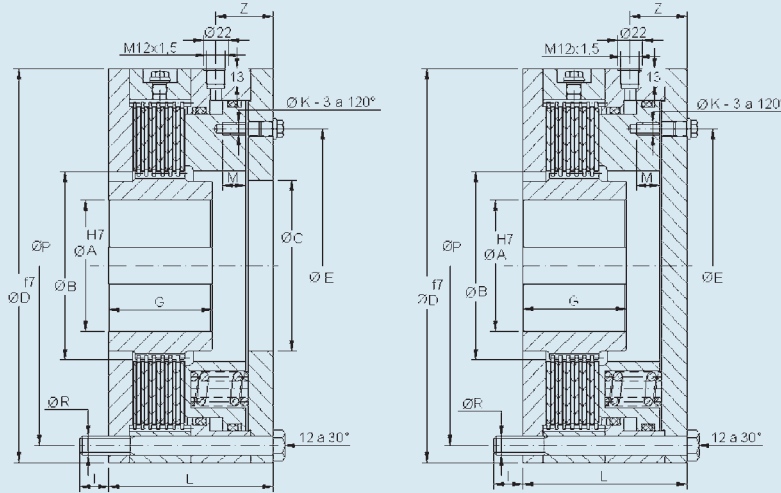
(*) Estos datos corresponden a funcionamiento en aceite, en caso de funcionamiento en seco consultar con GOIZPER.





Series 6.42 - 6.42 B

HYDRAULIC SAFETY BRAKES / FRENOS HIDRÁULICOS DE SEGURIDAD



Series			6.42 - 6.42 B						
Size (*)			16	23	45	63	90	40	77
Torque Par	Dry En seco	Estatic.	415	610	900	1235	2040	15290	17770
		Dinamic.	300	440	655	900	1485	11140	12940
	Wet En aceite	Estatic.	260	375	560	765	1260	9460	10990
		Dinamic.	200	295	440	600	990	7425	8625
Min. diseng. press.		Bar	18	18	24	24	24	45	35
Max. operating press.			300	300	300	300	300	300	300
Speed max.		min ⁻¹	3500	3500	3000	3000	2500	1250	1100
Weight		Kg	9	11	15	18	21	101	140
J int.		Kg.cm ²	7	13	38	58	95	1150	3800
ØA min.			20	25	30	30	35	60	80
ØA max.			40	45	55	60	65	115	150
ØB			62	77	89	102	111	167	225
ØC			53	65	75	80	90	130	205
ØD			135	150	165	180	200	345	400
ØE			66	79	90	102	128	240	290
G			45	50	55	55	60	72	110
ØK			M6	M6	M6	M6	M8	M10	M12
I			15	15	20	20	20	20	25
L			81	86	90	95	100	170	165
M			15	15	15	15	20	20,5	25
ØP			115	130	145	160	180	315	370
ØR			M8	M8	M10	M10	M10	M16	M16
Z			29	29	33	34	33	53	53

(*) Consult GOIZPER about higher sizes.
 (*) Tamaños superiores consultar con GOIZPER.

GOIZPER