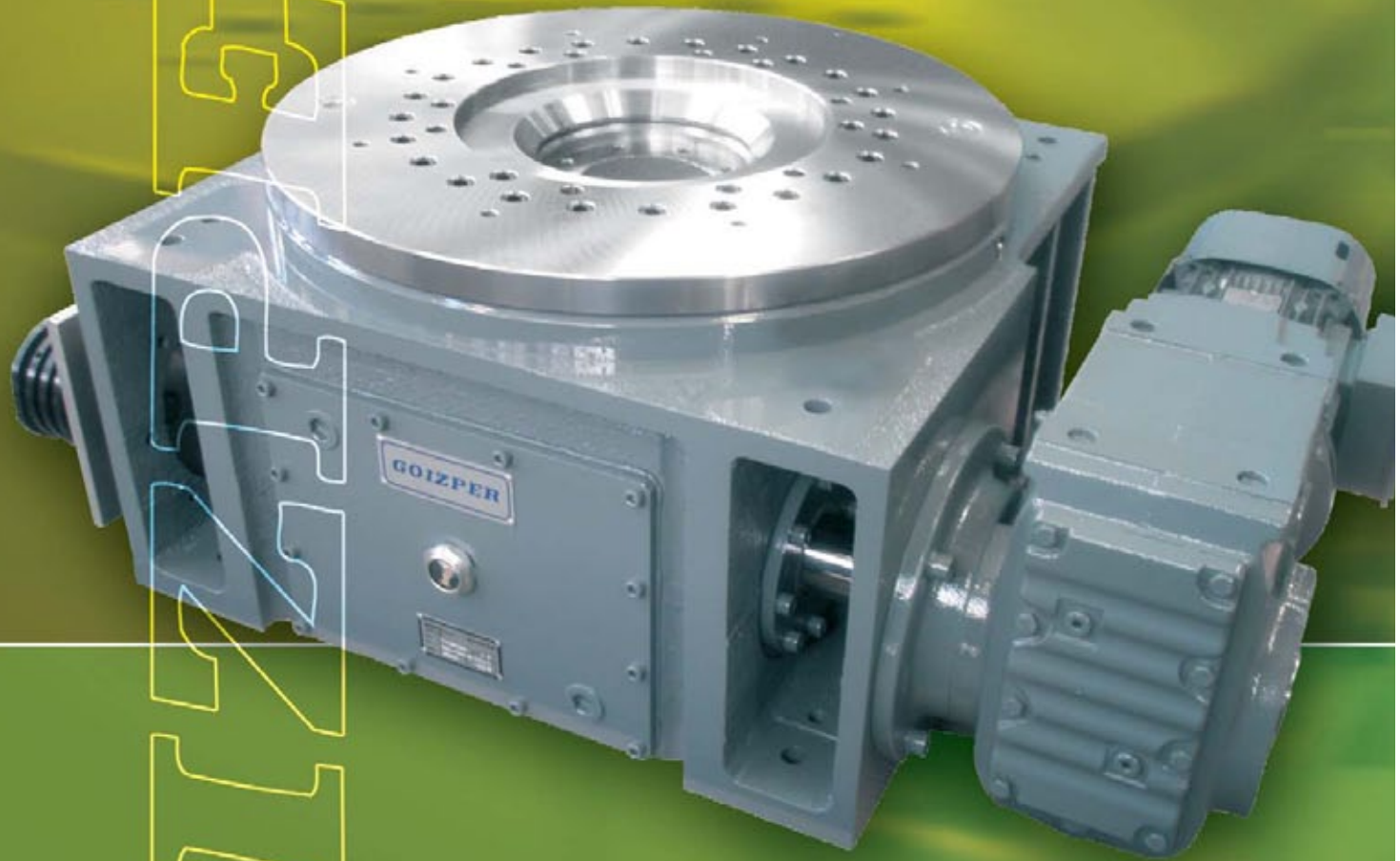


# GOIZPER



**FOR DRAWINGS, SPECIFICATIONS AND QUESTIONS REGARDING A GOIZPER PRODUCT, PLEASE CONTACT US:**  
Toll-Free: 1-800-813-0844 | Phone: 1-941-358-9447 | Fax: 1-941-358-9647 | Web: [www.goizperusa.com](http://www.goizperusa.com) | Email: [sales@goizperusa.com](mailto:sales@goizperusa.com)



## PGI SERIES INDEX TABLES

## TABLES D'INDEXAGE SERIE PGI

600

760

940

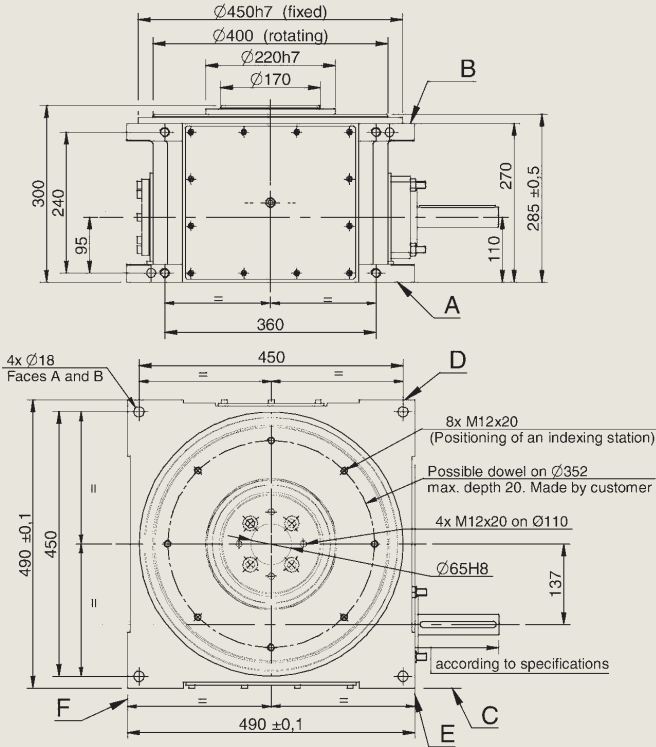
1120



Torque Technologies, the exclusive U.S. stocking agency of GOIZPER Clutches, Brakes and Clutch-Brakes provides expert, computerized application engineering and retrofit services to customers across the USA.



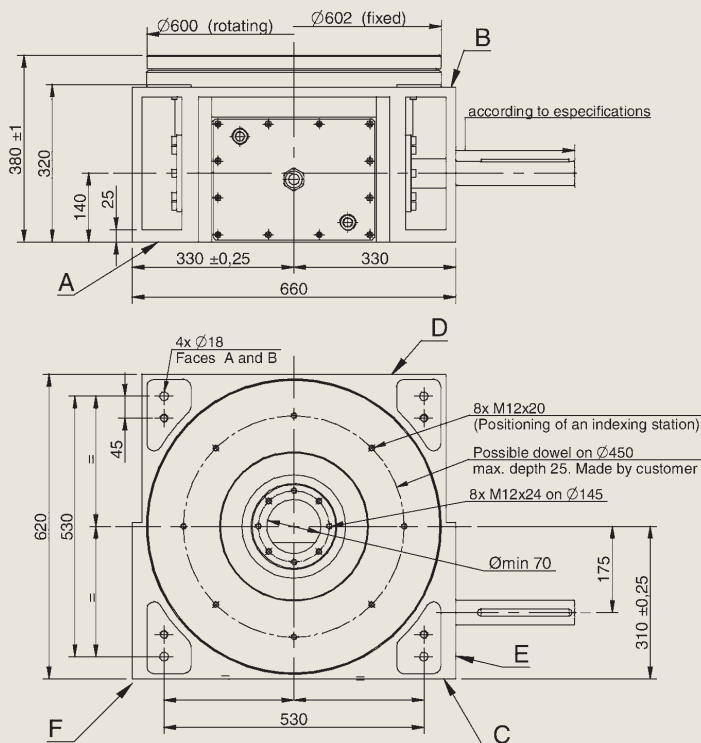
## PGI 600



### Technical Characteristics Caractéristiques techniques

Repeatability <i>Répétabilité</i>	$\pm 0,013$ on/sur $\varnothing 400$
Indexing accuracy <i>Précision d'indexage</i>	$\pm 0,028$ on/sur $\varnothing 400$
Maximum allowable axial load <i>Charge axiale max. admissible</i>	27.000 N
Maximum allowable tilting torque <i>Couple de basculement max. admissible</i>	3.150 Nm
Maximum allowable radial load <i>Charge radiale max. admissible</i>	18.000 N
Weight with moto reducer <i>Poids de l'indexeur motorisé</i>	~ 300 kg

## PGI 760

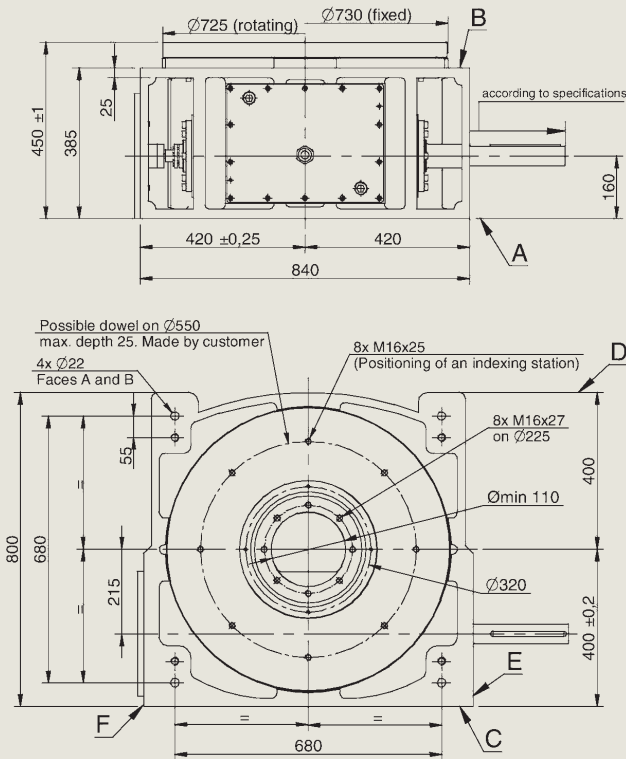


### Technical Characteristics Caractéristiques techniques

Repeatability <i>Répétabilité</i>	$\pm 0,017$ on/sur $\varnothing 600$
Indexing accuracy <i>Précision d'indexage</i>	$\pm 0,034$ on/sur $\varnothing 600$
Maximum allowable axial load <i>Charge axiale max. admissible</i>	585.000 N
Maximum allowable tilting torque <i>Couple de basculement max. admissible</i>	63.000 Nm
Maximum allowable radial load <i>Charge radiale max. admissible</i>	117.000 N
Weight with moto reducer <i>Poids de l'indexeur motorisé</i>	~ 550 kg



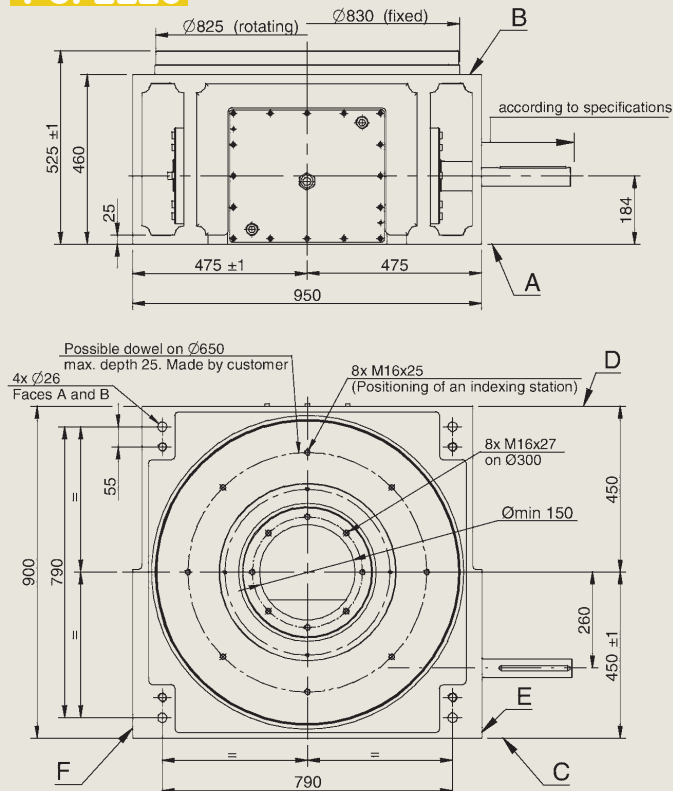
**PGI 940**



**Technical Characteristics**  
**Caractéristiques techniques**

Repeatability <i>Répétabilité</i>	$\pm 0,016$ on/sur $\varnothing 725$
Indexing accuracy <i>Précision d'indexage</i>	$\pm 0,03$ on/sur $\varnothing 725$
Maximum allowable axial load <i>Charge axiale max. admissible</i>	720.000 N
Maximum allowable tilting torque <i>Couple de basculement max. admissible</i>	91.350 Nm
Maximum allowable radial load <i>Charge radiale max. admissible</i>	144.000 N
Weight with moto reducer <i>Poids de l'indexeur motorisé</i>	$\sim 1.000$ kg

**PGI 1120**



**Technical Characteristics**  
**Caractéristiques techniques**

Repeatability <i>Répétabilité</i>	$\pm 0,015$ on/sur $\varnothing 825$
Indexing accuracy <i>Précision d'indexage</i>	$\pm 0,03$ on/sur $\varnothing 825$
Maximum allowable axial load <i>Charge axiale max. admissible</i>	900.000 N
Maximum allowable tilting torque <i>Couple de basculement max. admissible</i>	115.500 Nm
Maximum allowable radial load <i>Charge radiale max. admissible</i>	180.000 N
Weight with moto reducer <i>Poids de l'indexeur motorisé</i>	$\sim 1.500$ kg