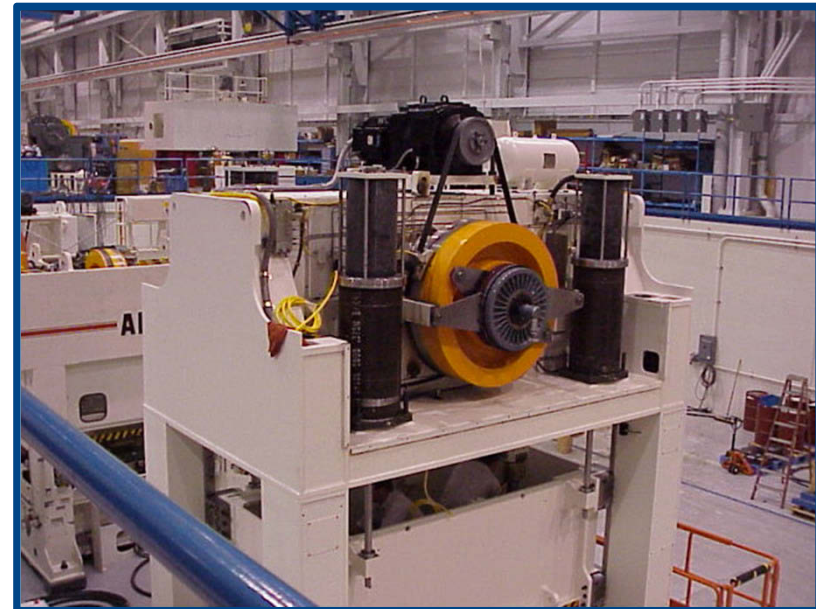


- A. Electromagnetic clutches and brakes
- B. Pneumatic clutches and brakes
- C. Hydraulic clutches and brakes
- D. Cams and Indexing units



As far as the Index units are concerned, Goizper manufactures parallel shafts, cylindrical and globoid cam index units. We also manufacture special cams according to customers' needs. Sectors like welding, packaging or automation in general are good examples of application of this product.



Main application:

- **Automotive**
- **Handling**
- **Packaging**



Globoid cam whose curve has been given a thermal treatment ensuring its high surface hardness and its great internal toughness, resisting the dynamic stresses generated by the movement.

- **No backlash through the travel and dwell position.**
- Internal locking by the cam inside the index drive.
- Control of accelerations and reduction of vibration.
- Great stopping accuracy.

Intermittent or **oscillating** systems :

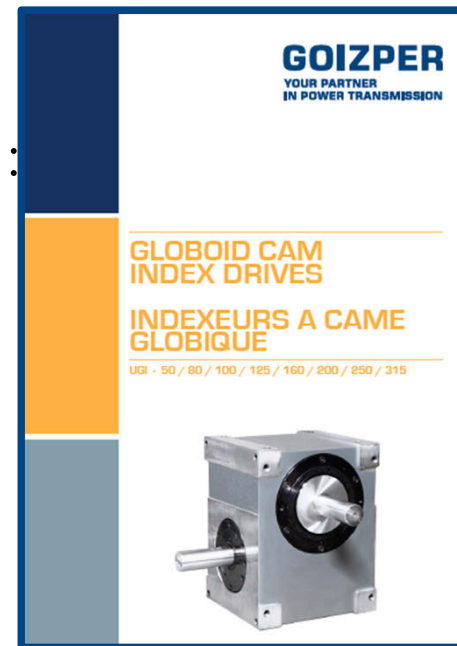
Number of stops :

2-3-4-5-6-8-10-12-16-20-24.

Output oscillation angle :

15-30-45-60-90-120-180° .

Others on demand



INDEXING TABLE with GLOBOIDAL CAM (PIC)



- Globoid cam with thermal treatment.
- Compact design making the unit **more economical**
- **Big output plate diameter with large hollow shaft.**

- **No backlash in the dwell position.**
- Control the accelerations & no vibration.
- Internal locking by the cam inside the table.
- Great stopping accuracy.

Number of stops :
2-3-4-5-6-8-10-12-16-20-24
and others on demand



GOIZPER
YOUR PARTNER
IN POWER TRANSMISSION

**COMPACT PLATE
INDEX DRIVES**

**TABLES D'INDEXAGE
A CAME GLOBIQUE**

PIC - 100 / 125 / 160 / 200 / 250 / 315
PIM - 100 / 175

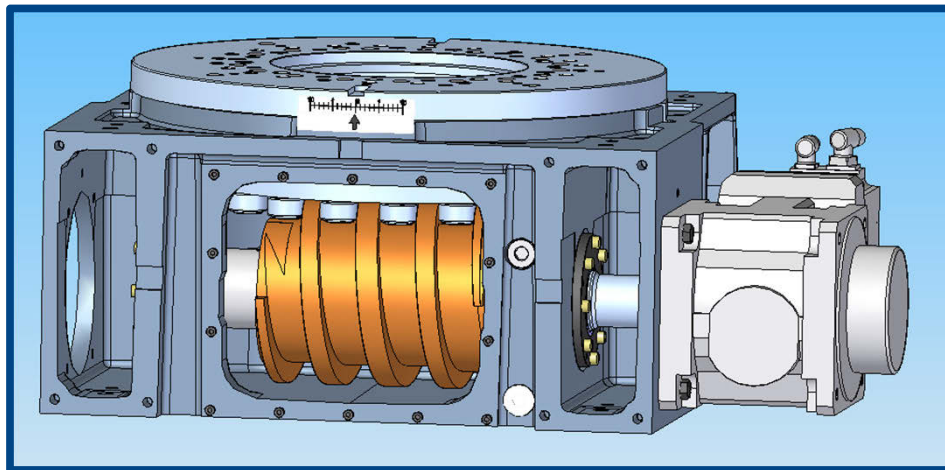
INDEXING TABLE with BARREL CAM (PGI)



- **Cylindrical cam** with thermal treatment.
- **Position of cam followers on important radius to provide high rigidity.**
- **High capacity roller crossed bearing** (by PGI 760).
- **Fixed centered column with large hole.**
- Interlocking performed by the cam inside the table.
- Control of accelerations and reduction of vibration.
- Great stopping accuracy.

Number of stops : 2-3-4-5-6-8-10-12-16-20-24
Others possible on demand.

Exists on FLEXIBLE driven by Servo motor.



GOIZPER
YOUR PARTNER
IN POWER TRANSMISSION

**PGI SERIES INDEX
TABLES**

**TABLES D'INDEXAGE
SERIE PGI**

PGI - 220 / 320 / 425 / 520 / 620 / 760 / 940 / 1120



INDEXING TABLE with BARREL CAM (PGI)

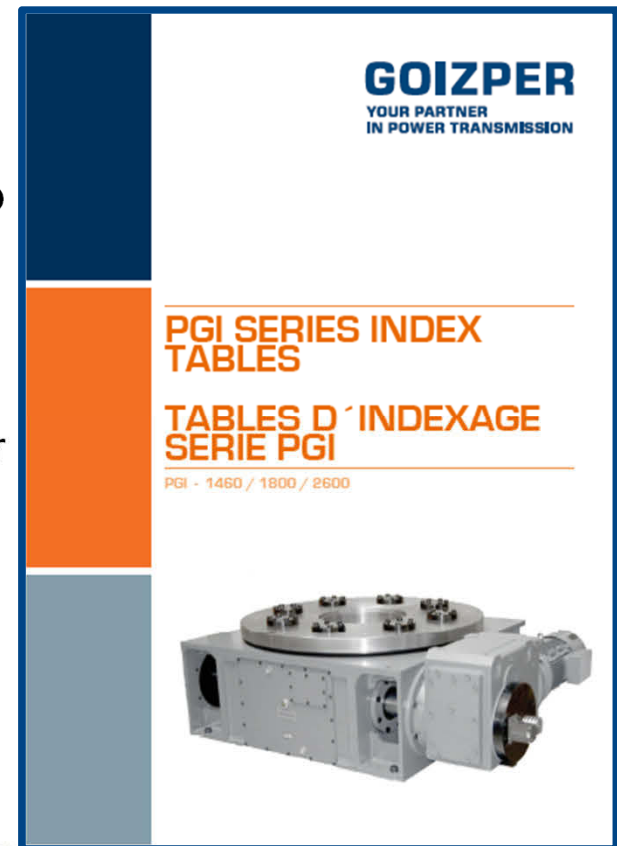
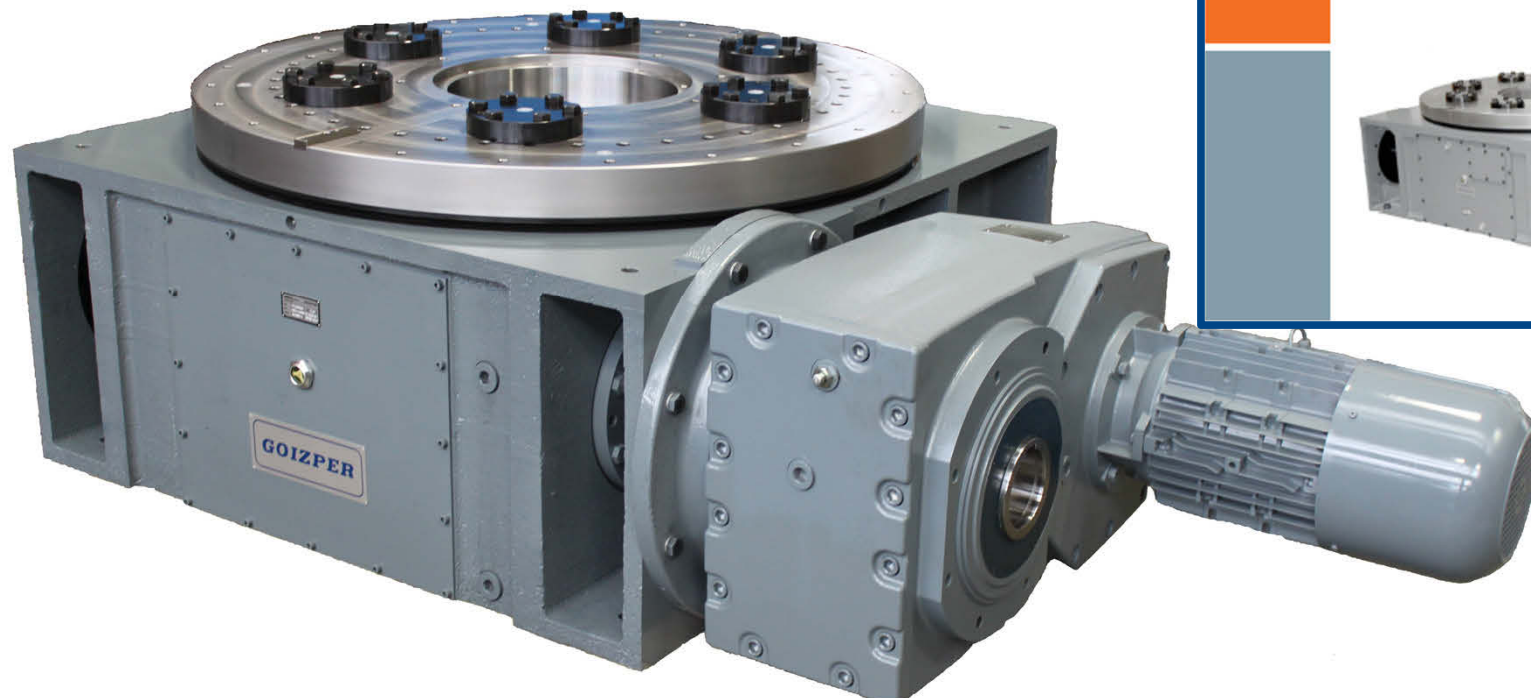


INDEXING TABLE with BARREL CAM (PGI)



- **Cylindrical cam** with thermal treatment.
- **Fixed centered column with large hole.**
- **Position of cam followers on important radius to provide high rigidity.**
- Interlocking performed by the cam inside the table.
- Great stopping accuracy.

Number of stops : 2-3-4-5-6-8-10-12-16-20-24 or



INDEXING TABLE with BARREL CAM (PGI)



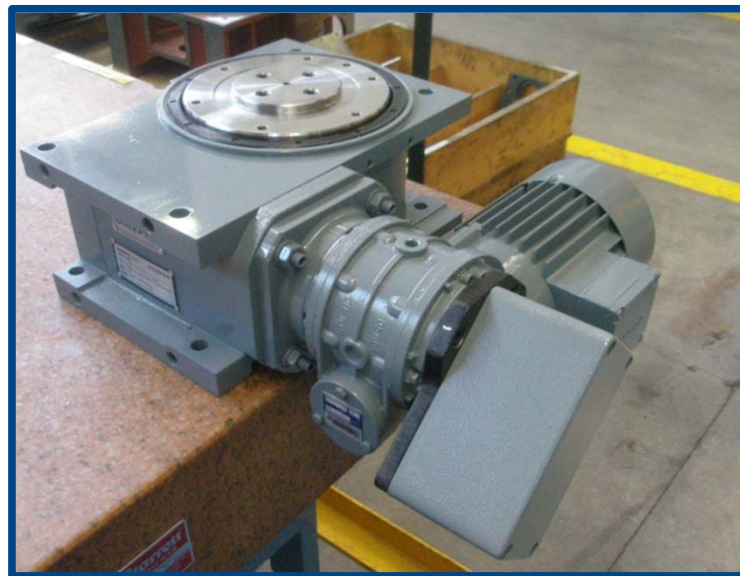
INDEXING TABLE with GLOBOIDAL CAM (PIM)



- Globoid cam with thermal treatment.
- Compact design making the unit **more economical**.
- **No backlash through the travel and dwell position.**
- Control of accelerations and reduction of vibration.
- Interlocking performed by the cam inside the index drive.
- Great stopping accuracy.

Number of stops :

2-3-4-5-6-8-10-12-16-20-24 and others on demand.



GOIZPER
YOUR PARTNER
IN POWER TRANSMISSION

**COMPACT PLATE
INDEX DRIVES**

**TABLES D'INDEXAGE
A CAME GLOBIQUE**

PIC - 100 / 125 / 160 / 200 / 250 / 315
PIM - 100 / 175



PARALLEL SHAFTS INDEX DRIVES (UIP)



The input-shaft is the cam-shaft. Two combined-action flat cams , made of ground hardened alloy steel are accomodated in.

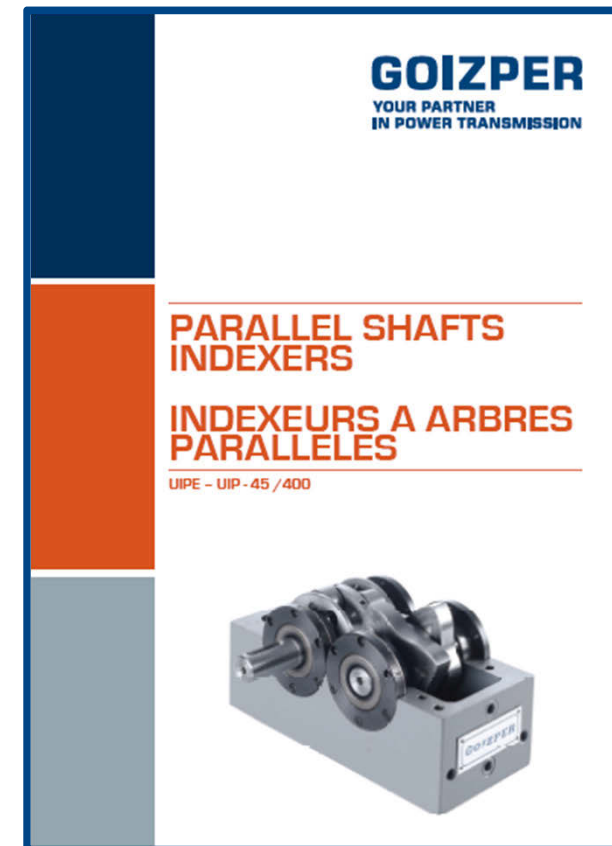
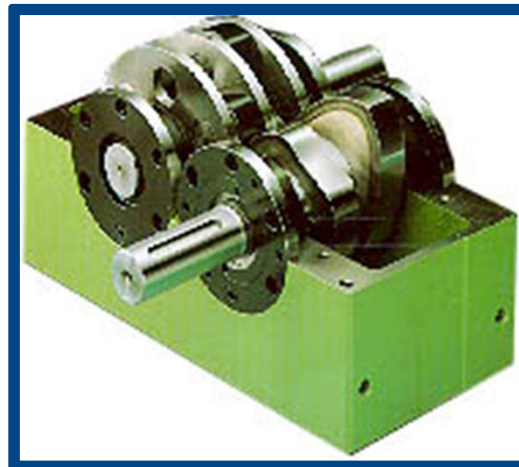
The output shaft or turret with cam followers that transmit the movement generated by the cams, causing the intermittent rotary movement.

Intermittent or **oscillating** systems :

Number of stops: 1-2-3-4-6-8.

Output oscillation angle: 10-15-30-45°

Others on demand.

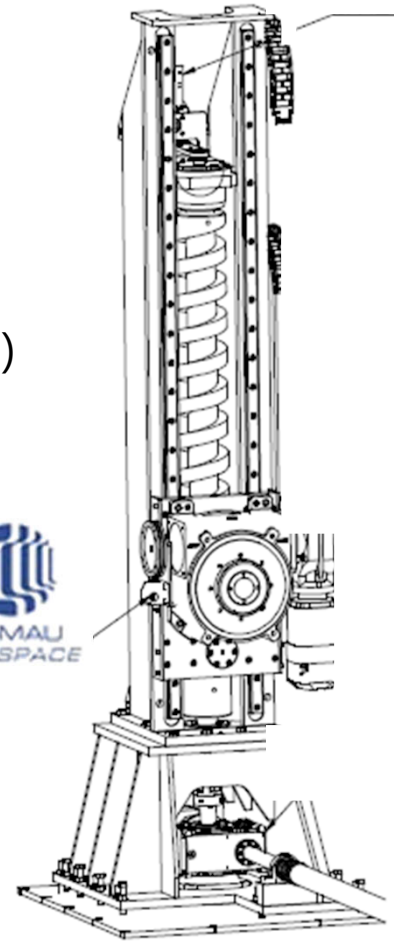


VERTICAL UNITS (UV)



- Cylindrical cam.
- **Fixed** or **flexible** (servo) stroke.
- Stroke :
- **On demand – Max 3500 mm.**
- Load up to 5000 kg.
- Can be installed as :
 - Simple column
 - Double columns (tandem)
 - 4 synchronized columns

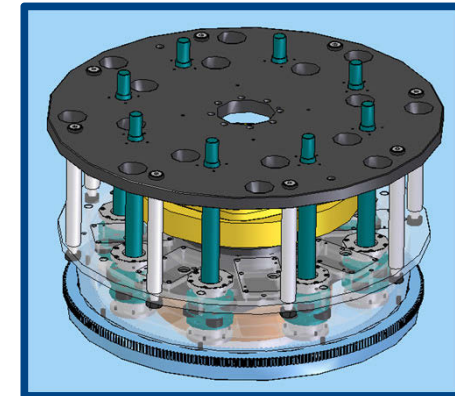
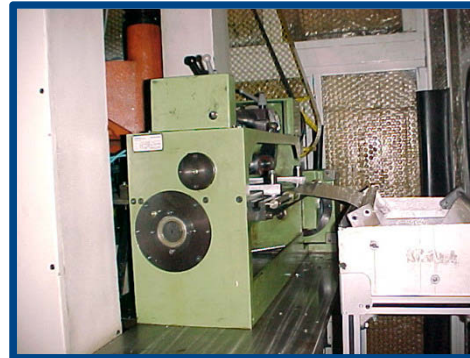
**Tandem stroke 1500 mm
for aerospace industry**



SPECIAL APPLICATIONS

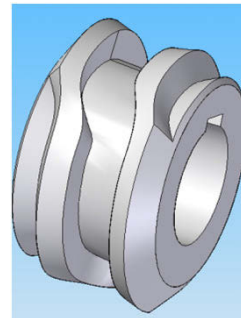
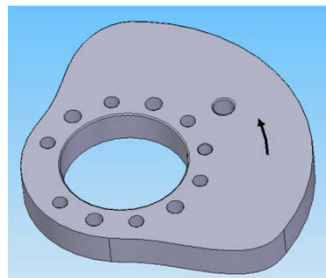
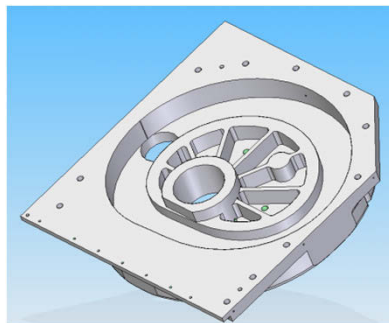


Goizper manufacture also press feeders, part handlers and special cams :



Flat cam

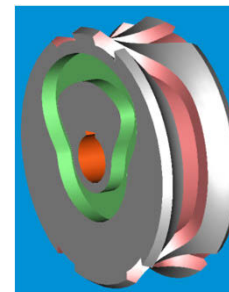
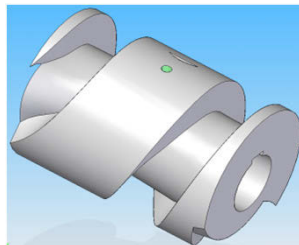
Radial groove cam



Cam with triple dwell zones



Cylindrical cam



Cam for tools changer ATC

INDUSTRIAL DIVISION - PLANT



ROTARY INDEX DRIVES CUSTOMERS



北京汽车
BAIC MOTOR



CFMA



Hama



Ashok Leyland



DACIA



SEAT



ROLLS
ROYCE



长城汽车
Great Wall



中国重汽
SINOTRUK



Mahindra

DAIMLER



GESTAMP
AUTOMOCION

TOWER
AUTOMOTIVE



MICHELIN

Valeo



IWoPLAST

ABB



KUKA



COMAU



s. n. o. p.



MA

FEDERAL
MOGUL



KÜTAHYA
PORSELEN



TITAN
Automation Solutions



TRAMONTINA



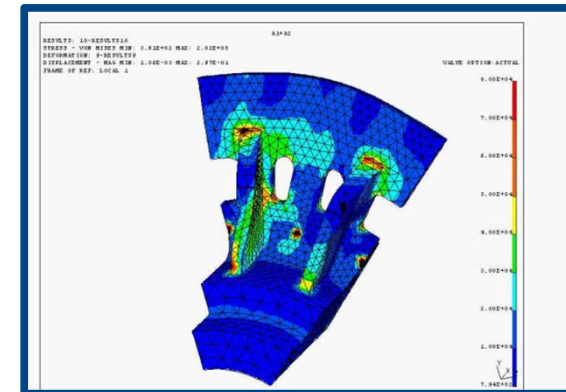
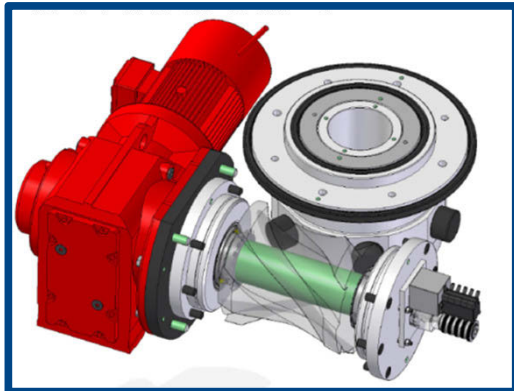
ALBÉA

Goizper has a Technology Center to development our Research and Innovation solutions – OLAKER.

Our R+D+I department together with our Technical Team, offers a complete and integral service covering the study of the concept, design, materials, prototypes, testing and validation analysis of our application solutions.



Our main concern is to develop new application solutions maintaining our high levels of quality employing the latest technologies.

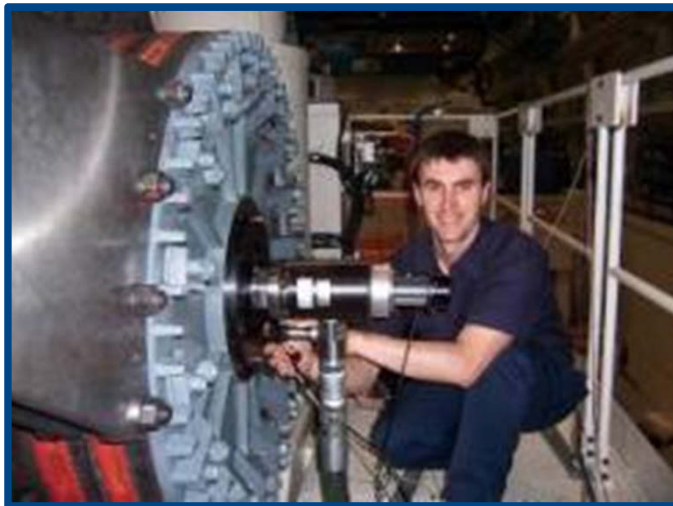


GOIZPER's **first** and **main** target is our customers' satisfaction. For this purpose, we understand that it is critical to offer products that accomplish the specifications of the applications



GOIZPER obtained ISO – 9001 certification in year 1994, certification emitted by the German company TÜV.

- We have a really updated workshop with machinery that is suitable for our range of products, based in our production, flexible and in short batches



- Our Technical department analyses our customers' requirements searching for the best solutions for every application.

- Moreover, our Engineering department prepares the different programs by using CAD – CAM, and transmit them directly to the different machining centers.



GOIZPER

YOUR PARTNER IN
POWER TRANSMISSION

