

HYDRAULIC CLUTCHES AND BRAKES

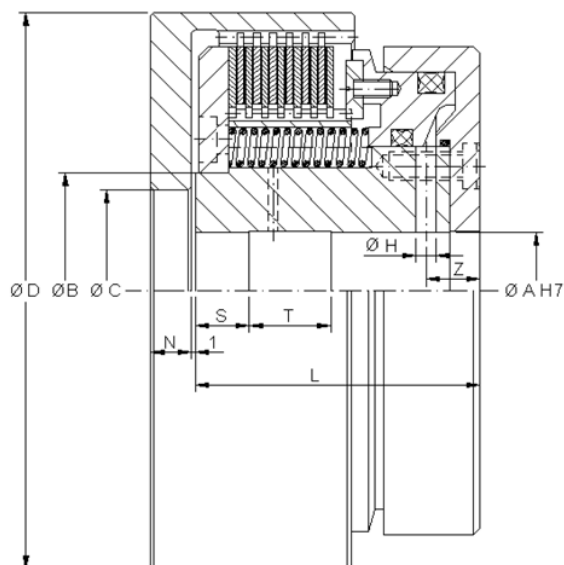
FRENOS Y EMBRAGUES HIDRÁULICOS

FOR DRAWINGS, SPECIFICATIONS AND QUESTIONS REGARDING A GOIZPER PRODUCT, PLEASE CONTACT US:
Toll-Free: 1-800-813-0844 | Phone: 1-941-358-9447 | Fax: 1-941-358-9647 | Email: sales@goizperusa.com | www.goizperusa.com



Torque Technologies, the exclusive U.S. stocking agency of GOIZPER Clutches, Brakes and Clutch-Brakes provides expert, computerized application engineering and retrofit services to customers across the USA.

HYDRAULIC CLUTCHES / EMBRAGUES HIDRÁULICOS



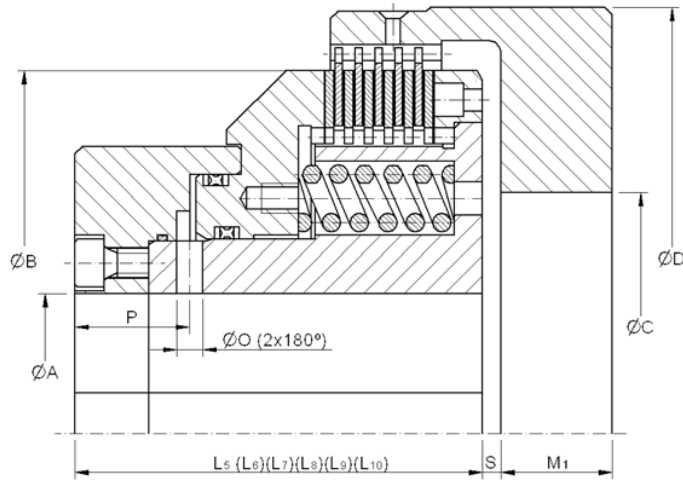
SERIES		6.32						
SIZE		11	16	23	45	90	18	81
Torque	Nm	110	160	230	450	900	2000	6200
Operation pressure	bar	18	18	18	24	24	20	25
Back pressure		1,5	1,5	1,5	2,5	2,5	4,7	3,8
Speed max.	min ⁻¹	3500	3500	3500	3000	2500	3000	3000
Weight	Kg	3	4,5	6,5	9	13	23	24
Inter. J	Kg cm ²	20	42	94	240	300	521	622
Exter.		11	20	46	100	230	467	467
New. Volum.	cm ³	10	15	20	31	40	66	82
Max. Wear Volum.		20	28	40	47	60	132	163
Ø A	Min.	20	25	25	30	40	40	40
	Max.	30	40	42	50	58	76	76
Ø B Ø C Ø D	Min.	40	50	52	62	70	84,2	84,2
		45	55	60	70	75	80	80
		93	113	133	145	165	200	200
Ø H		4	5	5	6	6	7	7
L		57	62	65	75	84	108	108
N		6	9	9	10	12	20	20
S		10	12	15	14	16	27	27
T		13	14	15	22	24	15	15
Z		12	12,5	13,5	15	16	16	18

(*) These data are for wet running, in case of dry running consult with GOIZPER.

(*) Estos datos corresponden a funcionamiento en aceite, en caso de funcionamiento en seco consultar con GOIZPER.

Series 6.11

HYDRAULIC CLUTCHES / EMBRAGUES HIDRÁULICOS



SERIES		6.11								
SIZE		25	75	77	78	81	82	83	84	
Static Clutch Torque (Nm)(*)	Number of discs	5	2500	6500	12500	25000	50000	100000	200000	328000
		6	3000	7800	15000	30000	60000	120000	240000	391000
		7	3500	9100	17500	35000	70000	140000	280000	456000
		8	4000	10400	20000	40000	80000	160000	320000	514000
		9	4500	11700	22500	45000	90000	180000	360000	574000
		10	5000	13000	25000	50000	100000	200000	400000	633000
J int. (kg m2)		5	0,09	0,372	1,948	2,501	5,932	24,29	66,86	172
		10	0,105	0,427	1,173	3,091	7,562	30,04	82,16	207
Weight (Kg)			40	80	160	295	510	1030	1900	3350
Max. speed (min ⁻¹)			1700	1300	1000	850	700	500	415	350
Operating pressure (bar)			40							
Back pressure (bar)			4							
Ø A H7min.			58	70	80	105	120	160	180	220
Ø A H7max.			75	95	115	150	180	250	310	375
Ø B			196	260	320	390	490	630	778	930
Ø C H7min.			80	100	120	155	185	255	315	380
Ø D			230	290	380	440	560	710	870	1040
L ₅			110	135	170	205	230	290	365	416
L ₆			115	141,5	177,5	215	241	304	381,5	435,5
L ₇			120	148	185	225	252	318	398	455
L ₈			125	154,5	192,5	235	263	332	414,5	474,5
L ₉			130	161	200	245	274	346	431	494
L ₁₀			135	167,5	207,5	255	285	360	447,5	513,5
M ₁			35	40	50	60	65	75	84	100
Ø O			6	7	10	11,5	15	19	24	28
P			31	36	48	60	65	82	100	125
S			5	5	5	5	5	5	10	10

(*) These data are for wet running, in case of dry running consult with GOIZPER.

(*) Estos datos corresponden a funcionamiento en aceite, en caso de funcionamiento en seco consultar con GOIZPER.

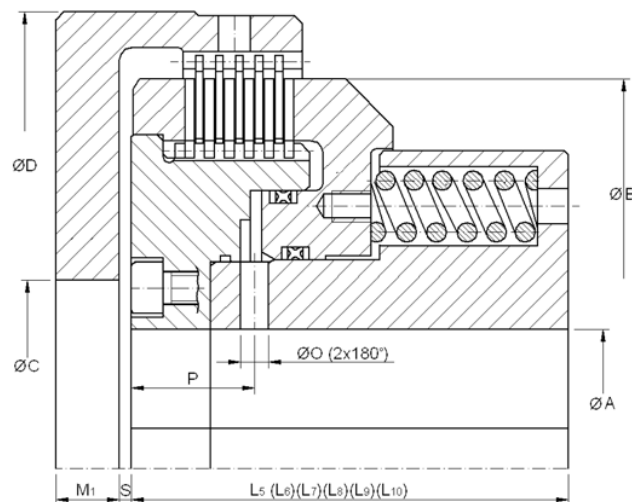
FOR DRAWINGS, SPECIFICATIONS AND QUESTIONS REGARDING A GOIZPER PRODUCT, PLEASE CONTACT US:
Toll-Free: 1-800-813-0844 | Phone: 1-941-358-9447 | Fax: 1-941-358-9647 | Email: sales@goizperusa.com | www.goizperusa.com



Torque Technologies, the exclusive U.S. stocking agency of GOIZPER Clutches, Brakes and Clutch-Brakes provides expert, computerized application engineering and retrofit services to customers across the USA.

Series 6.12

HYDRAULIC SAFETY BRAKES / FRENOS HIDRÁULICOS DE SEGURIDAD



SERIES		6.12								
SIZE		25	75	77	78	81	82	83	84	
Dynamic Clutch Torque (Nm)(*)	Number of discs	5	1000	2500	5000	10000	20000	40000	80000	120000
		6	1200	3000	6000	12000	24000	48000	96000	144000
		7	1400	3500	7000	14000	28000	56000	112000	168000
		8	1600	4000	8000	16000	32000	64000	128000	192000
		9	1800	4500	9000	18000	36000	72000	144000	216000
		10	2000	5000	10000	20000	40000	80000	160000	240000
J int. (kg m2)		5	0,09	0,372	0,948	2,501	5,832	24,29	66,86	172
		10	0,105	0,427	1,173	3,091	7,562	30,04	82,16	207
Weight (Kg)		40	80	160	295	510	1030	1900	3350	
Max. speed (min ⁻¹)		1700	1300	1000	850	700	500	415	350	
Operating pressure (bar)		40								
Back pressure (bar)		24								
Ø A H7min.		58	70	80	105	120	160	180	220	
Ø A H7max.		75	95	115	150	180	250	310	375	
Ø B		196	260	320	390	490	630	778	930	
Ø C H7min.		80	100	120	155	185	255	315	380	
Ø D		230	290	380	440	560	710	870	1040	
L ₅		110	135	170	205	230	290	365	416	
L ₆		115	141,5	177,5	215	241	304	381,5	435,5	
L ₇		120	148	185	225	252	318	398	455	
L ₈		125	154,5	192,5	235	263	332	414,5	474,5	
L ₉		130	161	200	245	274	346	431	494	
L ₁₀		135	167,5	207,5	255	285	360	447,5	513,5	
M ₁		35	40	50	60	65	75	84	100	
Ø O		6	7	10	11,5	15	19	24	28	
P		31	36	48	60	65	82	100	125	
S		5	5	5	5	5	5	10	10	

(*) These data are for wet running, in case of dry running consult with GOIZPER.

(*) Estos datos corresponden a funcionamiento en aceite, en caso de funcionamiento en seco consultar con GOIZPER.

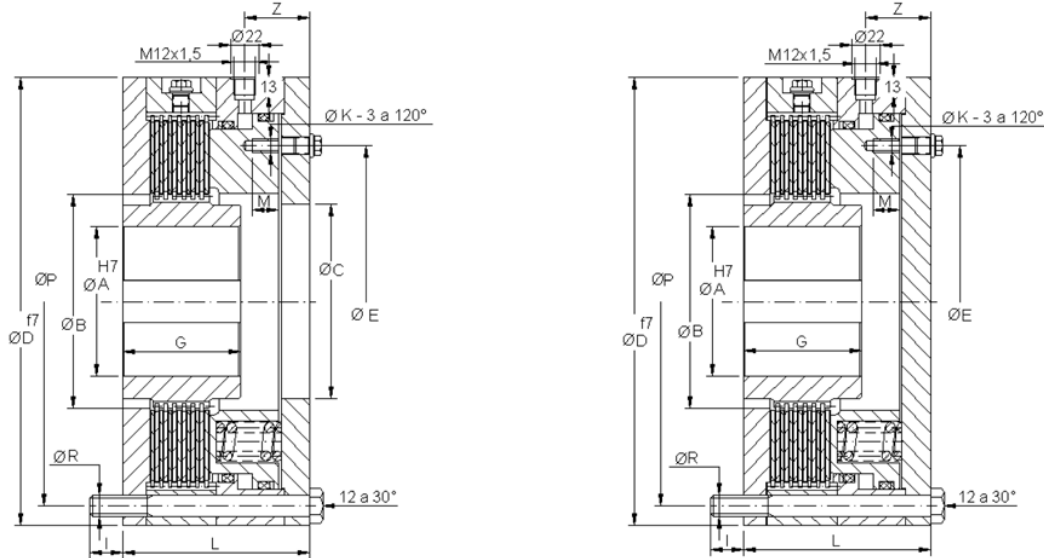
FOR DRAWINGS, SPECIFICATIONS AND QUESTIONS REGARDING A GOIZPER PRODUCT, PLEASE CONTACT US:
Toll-Free: 1-800-813-0844 | Phone: 1-941-358-9447 | Fax: 1-941-358-9647 | Email: sales@goizperusa.com | www.goizperusa.com



Torque Technologies, the exclusive U.S. stocking agency of GOIZPER Clutches, Brakes and Clutch-Brakes provides expert, computerized application engineering and retrofit services to customers across the USA.

Series 6.42 - 6.42 B

HYDRAULIC SAFETY BRAKES / FRENOS HIDRÁULICOS DE SEGURIDAD



SERIES				6.42 - 6.42 B						
SIZE				16	23	45	63	90	40	77
Torque Par	Dry En seco	Static.	Nm	415	610	900	1235	2040	15290	17770
		Dynamic.		300	440	655	900	1485	11140	12940
	Wet En aceite	Static.		260	375	560	765	1260	9460	10990
		Dynamic.		200	295	440	600	990	7425	8625
Min. diseng. press.		bar	18	18	24	24	24	45	35	
Max. operating press.			300	300	300	300	300	300	300	
Speed max.		min ⁻¹	3500	3500	3000	3000	2500	1250	1100	
Weight		Kg	9	11	15	18	21	101	140	
J int.		Kg.cm ²	7	13	38	58	95	1150	3800	
Ø A min.			20	25	30	30	35	60	80	
Ø A max.			40	45	55	60	65	115	150	
Ø B			62	77	89	102	111	167	225	
Ø C			53	65	75	80	90	130	205	
Ø D			135	150	165	180	200	345	400	
Ø E			66	79	90	102	128	240	290	
G			45	50	55	55	60	72	110	
Ø K			M6	M6	M6	M6	M8	M10	M12	
I			15	15	20	20	20	20	25	
L			81	86	90	95	100	170	165	
M			15	15	15	15	20	20,5	25	
Ø P			115	130	145	160	180	315	370	
Ø R			M8	M8	M10	M10	M10	M16	M16	
Z			29	29	33	34	33	53	53	

(*) Consult GOIZPER about higher sizes.

(*) Tamaños superiores consultar con GOIZPER.

FOR DRAWINGS, SPECIFICATIONS AND QUESTIONS REGARDING A GOIZPER PRODUCT, PLEASE CONTACT US:
Toll-Free: 1-800-813-0844 | Phone: 1-941-358-9447 | Fax: 1-941-358-9647 | Email: sales@goizperusa.com | www.goizperusa.com

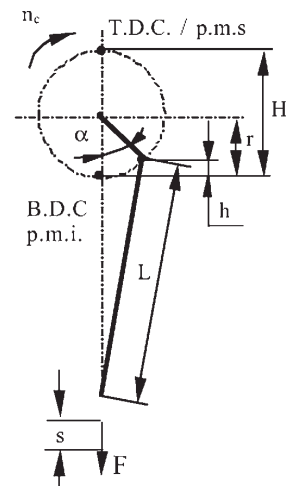


Torque Technologies, the exclusive U.S. stocking agency of GOIZPER Clutches, Brakes and Clutch-Brakes provides expert, computerized application engineering and retrofit services to customers across the USA.

QUESTIONNAIRE FOR PRESSES / CUESTIONARIO PARA PRENSAS

DATE / FECHA _____

GOIZPER	Data form for mechanical presses CL-BR unit selection Datos para la selección de freno-embragues para prensas		
CUSTOMER / Cliente Responsible / Responsable Dpt./ Dpto: Phone / Teléfono E-mail:			
Characteristics of the press: / Características de la prensa		Type / Tipo Single Stroke / Golpe a golpe <input type="checkbox"/>	Model / Modelo Continuous run / en continuo <input type="checkbox"/>
CL-BR mounting: / Montaje del F-E:		End of the shaft / Extremo del eje <input type="checkbox"/> Between frame and flywheel / Entre bastidor y volante <input type="checkbox"/>	
Type of CL-BR unit required: / Tipo de F-E solicitado		Pneumatically actuated / Neumático <input type="checkbox"/> Hydraulically actuated / Hidráulico <input type="checkbox"/>	
TECHNICAL DATA OF THE PRESS / Datos técnicos de la prensa			
1. Max force of the press. / Fuerza máxima de la prensa	F =	kN
2. Crankshaft radius / Radio de la excéntrica	r =	mm
3. Side rod length / Longitud de la biela	L =	mm
4. Working angle before B.D.C. / Ángulo de trabajo antes del P.M.I.	α =	°
Or effective working length / Ó altura efectiva de trabajo	h =	mm
Or working length / Ó altura de trabajo	s =	mm
5. Crankshaft max speed / Revoluciones max del eje de la excéntrica	n_c =	min ⁻¹
6. CL-BR max speed / Revoluciones max del F-E	n_e =	min ⁻¹
7. Moment of inertia of all the masses to be braked, reduced to the cl-br shaft (CL-BR inertia excluded) Momento de inercia de las masas a frenar reducido al eje del F-E (ex. inercia del F-E) J_m = kg m ²			
8. Delay of relay and valve / Tiempo de respuesta del mando y válvula	t_r =	sg
9. Number of engagements per minute at max. speed, working at single stroke. / Nº de maniobras/min requeridas trabajando golpe a golpe a rpm max. N_s = min ⁻¹			
BRAKING VALUES / Valores de frenado			
10. Max.tot braking angle req. in the crankshaft (delay of relay and valve incl.) / Ángulo de frenado total max requerido en el eje de excéntrica (incl. tiempo de mando) α_{fe} = °			
11. Max total braking time required (delay of relay and valve included) / Tiempo de frenado máximo requerido (considerando el tiempo de mando) t_f = sg			



FOR DRAWINGS, SPECIFICATIONS AND QUESTIONS REGARDING A GOIZPER PRODUCT, PLEASE CONTACT US:
 Toll-Free: 1-800-813-0844 | Phone: 1-941-358-9447 | Fax: 1-941-358-9647 | Email: sales@goizperusa.com | www.goizperusa.com
TORQUE TECHNOLOGIES
 Torque Technologies, the exclusive U.S. stocking agency of GOIZPER Clutches, Brakes and Clutch-Brakes provides expert, computerized application engineering and retrofit services to customers across the USA.

QUESTIONNAIRE FOR APPLICATIONS IN GENERAL / CUESTIONARIO PARA APLICACIONES EN GENERAL

DATE / FECHA _____

GOIZPER	Data form for CL-BR unit selection Datos para la selección de freno-embragues
CUSTOMER / Cliente Responsible / Responsable Dpt./ Dpto: Phone / Teléfono E-mail:	
Type of CL-BR unit required / Tipo de freno-embrague solicitado: Pneumatic / Neumático: <input type="checkbox"/> Hydraulic / Hidráulico: <input type="checkbox"/> Electromagnetic / Electromagnético: <input type="checkbox"/> Mechanic / Mecánico: <input type="checkbox"/>	
Machine Type / Tipo de máquina: Drive machine / Máquina motriz: Type / Tipo: Electric Motor / Motor eléctrico: <input type="checkbox"/> Combustion engine / Motor de combustión: <input type="checkbox"/> Hydraulic motor / Motor hidráulico: <input type="checkbox"/> Other / Otro: Power / Potencia P= Kw Speed / Velocidad: n= min ⁻¹ Reduction to CL-BR / Reducción al freno embrague:	
Mounting / Montaje: Rotary axis / Eje de rotación: Horizontal: <input type="checkbox"/> Vertical: <input type="checkbox"/>	
CL-BR situation / Situación de freno-embrague: Exposed / Expuesto: <input type="checkbox"/> Closed housing / Alojamiento cerrado: <input type="checkbox"/> Shaft diameter / Diámetro de ejes: Driver side / Parte conductora: mm. Driven side / Parte conducida: mm.	
Required torque on clutches or brakes / Par necesario en el freno-embrague: Engaging dynamic torque / Par de accionamiento dinámico: Ms= Nm Transmissible static torque / Par estático transmisible: Mt= Nm Curbe or value of load torque / Curva o valor del par de carga: M _L = Nm	
Operating conditions / Condiciones del accionamiento: Stationary / Estático: <input type="checkbox"/> Full load / Plena carga: <input type="checkbox"/> Without load / Sin carga: <input type="checkbox"/> Initial driver speed / Velocidad inicial del conductor: n ₁₀ = min ⁻¹ Initial driven speed / Velocidad inicial del conducido: n ₂₀ = min ⁻¹ Max. Speed / Velocidad máxima: n _{max} = min ⁻¹	
Moments of inertia reduced to CL-BR / Momento de inercia reducido al freno-embrague: Driver side / Parte conductora: J _A = kgm ² Driven side / Parte conducida: J _L = kgm ²	
Times / Tiempos: Braking time / Tiempo de frenada: t ₃ = s Clutching time / Tiempo de embragado: t ₃ = s	
Operating frequency / Frecuencia de accionamiento: N= min ⁻¹	





GOIZPER

- GOIZPER FRANCE
Espace d'Activités Becquerel
15, Avenue Henri Becquerel
51000 Châlons en Champagne - France

Tel: + 33 (0)3 26 21 08 39
goizperfrance@goizper.com

- GOIZPER GmbH
Bevertalstr. 20
42499 Hückeswagen
Deutschland

Tel.: +49 (0) 2192 935 99 03
goizperdeutschland@goizper.com

- GOIZPER TRANSMISSION MACHINERY (WUXI) CO., LTD.
No. 3 Workshop, Fengneng Road,
Wind Power Science & Technology Industrial Park,
Huishan Economic Development Zone,
214174 Wuxi, Jiangsu - China

Tel: +86 186 217 020 36
goizperchina@goizper.com

 **Goizper Group**
Growing through cooperation

GOIZPER GROUP
Antigua, 4
20577 Antzuola
Gipuzkoa – Spain

Tel.: + 34 943 78 60 00
industrial@goizper.com

www.goizper.com

Ref: HYDRAULIC CB ESP/EN 2014

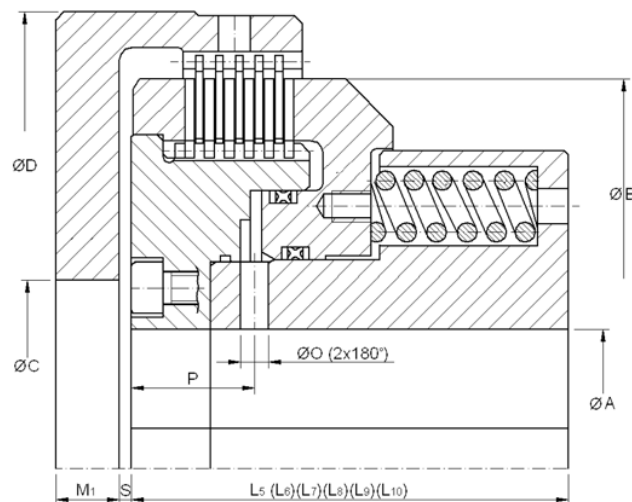
FOR DRAWINGS, SPECIFICATIONS AND QUESTIONS REGARDING A GOIZPER PRODUCT, PLEASE CONTACT US:
Toll-Free: 1-800-813-0844 | Phone: 1-941-358-9447 | Fax: 1-941-358-9647 | Email: sales@goizperusa.com | www.goizperusa.com



Torque Technologies, the exclusive U.S. stocking agency of GOIZPER Clutches, Brakes and Clutch-Brakes provides expert, computerized application engineering and retrofit services to customers across the USA.

Series 6.12

HYDRAULIC SAFETY BRAKES / FRENOS HIDRÁULICOS DE SEGURIDAD



SERIES		6.12								
SIZE		25	75	77	78	81	82	83	84	
Dynamic Clutch Torque (Nm)(*)	Number of discs	5	1000	2500	5000	10000	20000	40000	80000	120000
		6	1200	3000	6000	12000	24000	48000	96000	144000
		7	1400	3500	7000	14000	28000	56000	112000	168000
		8	1600	4000	8000	16000	32000	64000	128000	192000
		9	1800	4500	9000	18000	36000	72000	144000	216000
		10	2000	5000	10000	20000	40000	80000	160000	240000
J int. (kg m2)		5	0,09	0,372	0,948	2,501	5,832	24,29	66,86	172
		10	0,105	0,427	1,173	3,091	7,562	30,04	82,16	207
Weight (Kg)		40	80	160	295	510	1030	1900	3350	
Max. speed (min ⁻¹)		1700	1300	1000	850	700	500	415	350	
Operating pressure (bar)		40								
Back pressure (bar)		24								
Ø A H7min.		58	70	80	105	120	160	180	220	
Ø A H7max.		75	95	115	150	180	250	310	375	
Ø B		196	260	320	390	490	630	778	930	
Ø C H7min.		80	100	120	155	185	255	315	380	
Ø D		230	290	380	440	560	710	870	1040	
L ₅		110	135	170	205	230	290	365	416	
L ₆		115	141,5	177,5	215	241	304	381,5	435,5	
L ₇		120	148	185	225	252	318	398	455	
L ₈		125	154,5	192,5	235	263	332	414,5	474,5	
L ₉		130	161	200	245	274	346	431	494	
L ₁₀		135	167,5	207,5	255	285	360	447,5	513,5	
M ₁		35	40	50	60	65	75	84	100	
Ø O		6	7	10	11,5	15	19	24	28	
P		31	36	48	60	65	82	100	125	
S		5	5	5	5	5	5	10	10	

(*) These data are for wet running, in case of dry running consult with GOIZPER.

(*) Estos datos corresponden a funcionamiento en aceite, en caso de funcionamiento en seco consultar con GOIZPER.

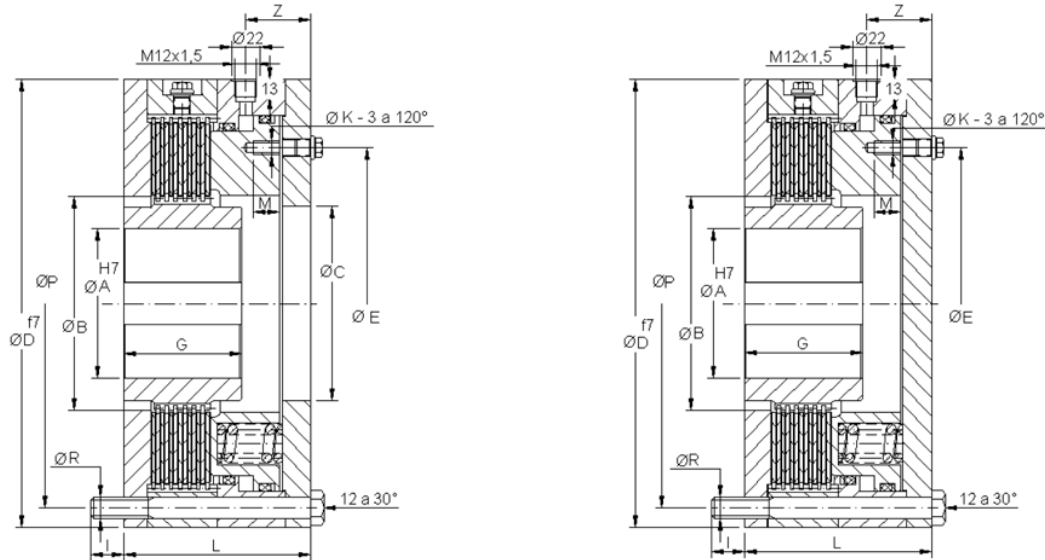
FOR DRAWINGS, SPECIFICATIONS AND QUESTIONS REGARDING A GOIZPER PRODUCT, PLEASE CONTACT US:
Toll-Free: 1-800-813-0844 | Phone: 1-941-358-9447 | Fax: 1-941-358-9647 | Email: sales@goizperusa.com | www.goizperusa.com



Torque Technologies, the exclusive U.S. stocking agency of GOIZPER Clutches, Brakes and Clutch-Brakes provides expert, computerized application engineering and retrofit services to customers across the USA.

Series 6.42 - 6.42 B

HYDRAULIC SAFETY BRAKES / FRENOS HIDRÁULICOS DE SEGURIDAD



SERIES				6.42 - 6.42 B						
SIZE				16	23	45	63	90	40	77
Torque Par	Dry En seco	Static.	Nm	415	610	900	1235	2040	15290	17770
		Dynamic.		300	440	655	900	1485	11140	12940
	Wet En aceite	Static.		260	375	560	765	1260	9460	10990
		Dynamic.		200	295	440	600	990	7425	8625
Min. diseng. press.		bar	18	18	24	24	24	45	35	
Max. operating press.			300	300	300	300	300	300	300	
Speed max.		min ⁻¹	3500	3500	3000	3000	2500	1250	1100	
Weight		Kg	9	11	15	18	21	101	140	
J int.		Kg.cm ²	7	13	38	58	95	1150	3800	
Ø A min.			20	25	30	30	35	60	80	
Ø A max.			40	45	55	60	65	115	150	
Ø B			62	77	89	102	111	167	225	
Ø C			53	65	75	80	90	130	205	
Ø D			135	150	165	180	200	345	400	
Ø E			66	79	90	102	128	240	290	
G			45	50	55	55	60	72	110	
Ø K			M6	M6	M6	M6	M8	M10	M12	
I			15	15	20	20	20	20	25	
L			81	86	90	95	100	170	165	
M			15	15	15	15	20	20,5	25	
Ø P			115	130	145	160	180	315	370	
Ø R			M8	M8	M10	M10	M10	M16	M16	
Z			29	29	33	34	33	53	53	

(*) Consult GOIZPER about higher sizes.

(*) Tamaños superiores consultar con GOIZPER.

FOR DRAWINGS, SPECIFICATIONS AND QUESTIONS REGARDING A GOIZPER PRODUCT, PLEASE CONTACT US:
Toll-Free: 1-800-813-0844 | Phone: 1-941-358-9447 | Fax: 1-941-358-9647 | Email: sales@goizperusa.com | www.goizperusa.com



Torque Technologies, the exclusive U.S. stocking agency of GOIZPER Clutches, Brakes and Clutch-Brakes provides expert, computerized application engineering and retrofit services to customers across the USA.